

# PIPE CLAMPS



## RISER CLAMP

FIG. 550, 551, & 553

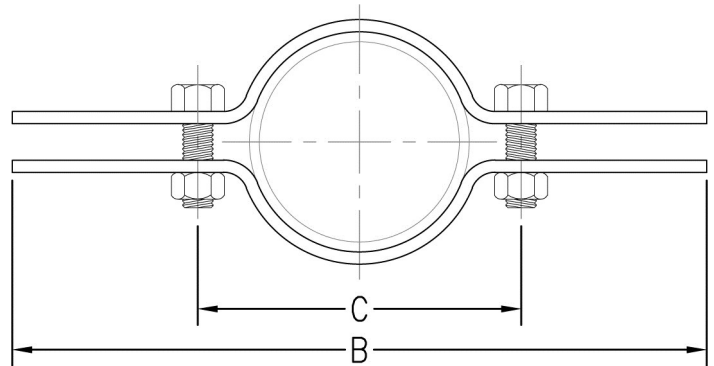
**Function:** Designed for supporting and stabilizing vertical pipe runs. The PVC coating on Fig. 553 protects the pipe from the metal surface of the clamp. This product is not intended for use with hanger rods. Clamp is designed for standard iron pipe O.D. and must be considered when sizing other types of piping.

**Material:** Carbon steel (Type 304 or 316 Stainless Steel upon request)

**Finish:** Plain (Fig. 550), electro-galvanized (Fig. 551), or plain with PVC coating (Fig. 553), or (Hot dipped galvanized with electro-galvanized hardware upon request)

**Approvals:** Underwriters' Laboratories Listed in the U.S. (UL) and Factory Mutual Approved for sizes 3/4" (20mm) to 8" (200mm) only. Complies with Federal Specification A-A-1192A (Type 8) and Manufacturers' Standardization Society ANSI/MSS SP-58 (Type 8) which supersedes ANSI/MSS SP-69.

**Ordering:** Specify figure number, pipe size, material, and finish.



**Installation practice for Model 550 Riser Clamps:**  
When possible the clamp should be placed under a coupling, hub, or welded lugs on steel pipe. Bolt torques should be per industry standards.

Pipe Size		B		C		Bolt Size	Max. Rec. Load		Wt. Each	
							lbs.	kN	lbs.	kg
1/2	(15)	9	(228.60)	2 1/2	(63.50)	3/8 x 1 1/4	220	(0.98)	1.05	(.48)
3/4	(20)	8 7/8	(225.43)	2 3/8	(60.33)	3/8 x 1 1/4	220	(0.98)	1.05	(.48)
1	(25)	8 3/4	(222.25)	2 1/4	(57.15)	3/8 x 1 1/4	220	(0.98)	1.05	(.48)
1 1/4	(32)	9 1/4	(234.95)	2 3/4	(69.85)	3/8 x 1 1/4	250	(1.11)	1.10	(.50)
1 1/2	(40)	10	(254.00)	3 1/2	(88.90)	3/8 x 1 1/4	250	(1.11)	1.17	(.53)
2	(50)	10 1/4	(260.35)	3 3/4	(95.25)	3/8 x 1 1/4	300	(1.33)	1.20	(.54)
2 1/2	(65)	11 1/8	(282.58)	4 5/8	(117.48)	3/8 x 1 1/2	400	(1.78)	1.89	(.86)
3	(80)	11 3/4	(298.45)	5 1/4	(133.35)	3/8 x 1 1/2	500	(2.22)	1.99	(.90)
3 1/2	(90)	12 1/2	(317.50)	6	(152.40)	3/8 x 1 1/2	600	(2.67)	2.17	(.98)
4	(100)	13	(330.20)	6 1/2	(165.10)	1/2 x 1 3/4	750	(3.34)	2.21	(1.00)
5	(125)	14 1/4	(361.95)	7 3/4	(196.85)	1/2 x 1 3/4	1500	(6.67)	3.24	(1.47)
6	(150)	15 3/8	(390.53)	8 7/8	(225.43)	1/2 x 1 3/4	1600	(7.12)	3.89	(1.76)
8	(200)	18 1/2	(469.90)	12	(304.80)	5/8 x 2	2500	(11.12)	7.60	(3.45)
10	(250)	20 1/2	(520.70)	14	(355.60)	5/8 x 2	2500	(11.12)	11.10	(5.03)
12	(300)	22 1/2	(571.50)	16	(406.40)	5/8 x 2 1/2	2700	(12.01)	16.50	(7.48)
14	(350)	25 1/8	(638.18)	18 5/8	(473.08)	5/8 x 3	2700	(12.01)	17.70	(8.03)
16	(400)	26 1/4	(666.75)	20 3/4	(527.05)	3/4 x 3 1/2	2900	(12.90)	30.40	(13.79)
18	(450)	27 7/8	(708.03)	22 3/8	(568.33)	3/4 x 3 1/2	2900	(12.90)	33.30	(15.10)
20	(500)	30	(762.00)	24 1/2	(622.30)	3/4 x 3 1/2	2900	(12.90)	36.30	(16.47)
24	(600)	35	(889.00)	29 1/2	(749.30)	7/8 x 3 1/2	2900	(12.90)	48.68	(22.08)
30	(750)	42 3/8	(1076.33)	35 3/8	(898.52)	7/8 x 3 1/2	2900	(12.90)	60.16	(27.29)

Recommended Torque For Pipe Clamp Hardware						
Bolt Size	1/4"-20	5/16"-18	3/8"-16	1/2"-13	5/8"-11	3/4"-10 & Larger
ft-lbs.	6	11	19	50	65	75
N-m	(8)	(15)	(26)	(68)	(88)	(102)

Unless otherwise specified, all dimensions on drawings and in charts are in inches and dimensions shown in parentheses are in millimeters.

THREADED ACCESSORIES  
CPVC STRAPS  
BAND HANGERS  
BEAM CLAMPS  
CLEVIS HANGERS  
PIPE ROLLER SUPPORTS  
SPLIT RING HANGERS  
PIPE CLAMPS  
CENTER LOAD BEAM CLAMPS  
PIPE SHIELDS, INSULATION, & SADDLES  
PIPE GUIDES & SLIDES  
WALL BRACKETS  
PIPE SUPPORTS  
STRUCTURAL ATTACHMENTS  
SEISMIC BRACING